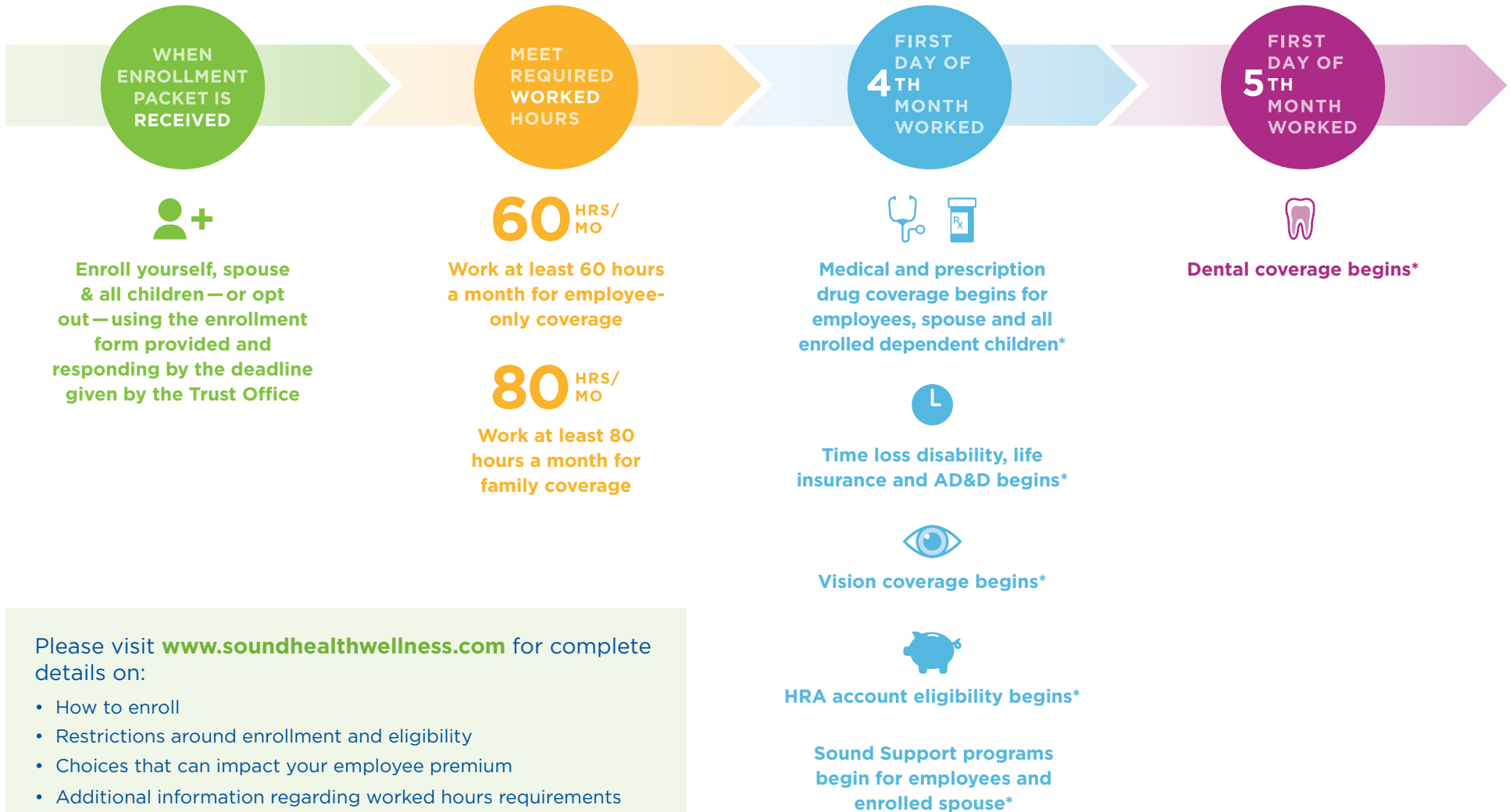


# SoundPlus Plan<sup>†</sup> Benefit Eligibility Timelines



Please visit [www.soundhealthwellness.com](http://www.soundhealthwellness.com) for complete details on:

- How to enroll
- Restrictions around enrollment and eligibility
- Choices that can impact your employee premium
- Additional information regarding worked hours requirements

For questions regarding eligibility and the enrollment process please call: **(206) 282-4500** or **(800) 225-7620**

*<sup>†</sup>This applies only to certain non-retail employers who have agreed to provide this eligibility.*

*\*If required work hours are met.*